

Version: V1.1

Level: Public


Shenzhen Concox Information Technology Co., Ltd

GPS Tracker

USB Cable Driver Installation Guide

(X1)

Copyright and Disclaimer:

- ⦿ All copyrights belong to Shenzhen Concox Information Technology Co., Ltd. You are not allowed to revise, copy or spread this file in any form without consent of Concox.
- ⦿  is trademark of Concox, protected by law.
- ⦿ Please read this user guide carefully before installation to avoid any possible personal injury or property loss.

Concox

Document History

Version	Revision Date	Author	Detail
V1.1	May 9, 2017	Support16	Initial Version

Concox

Contents

1 Overview.....	5
2 Installing USB Cable Driver	5


Concox

1 Overview

USB cable driver is the necessary driver to run USB cable well. The USB cable is used to connect terminal with parameter tool, debug tool or firmware upgrade suite software on PC.

2 Installing USB Cable Driver

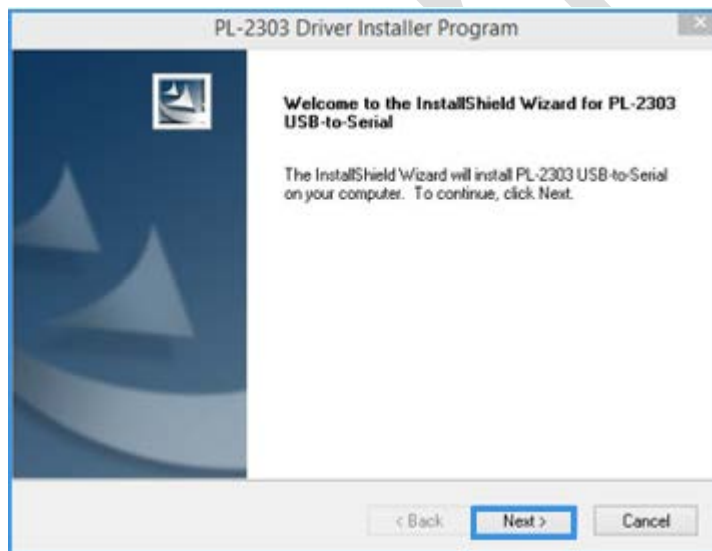
2.1 Visit www.iconcox.com click "Support" menu to download USB cable driver.

 PL2303_Prolific_DriverInstaller_v1.11.0.exe

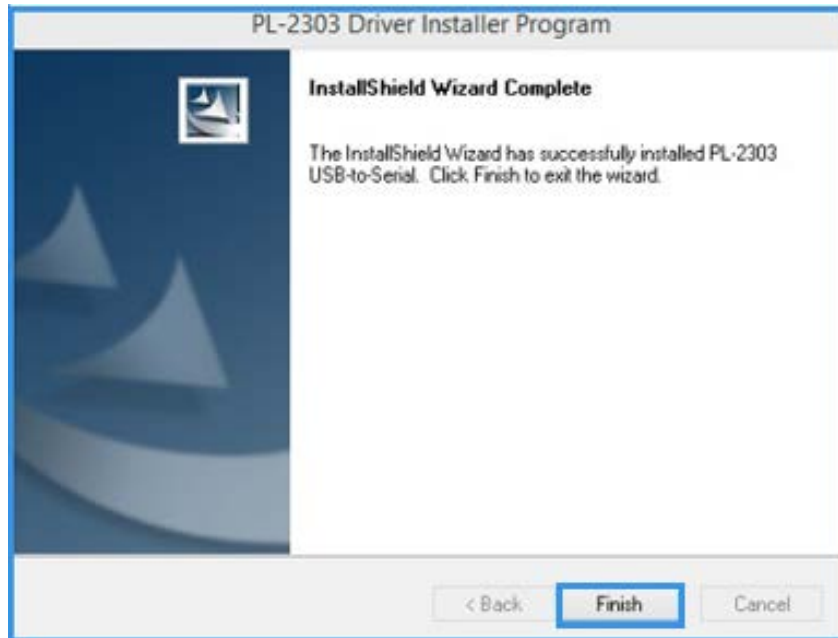
USB cable driver Support:

- Windows XP (32&64bit)
- Windows 7 (32&64bit)
- Windows 8 (32&64bit)

2.2 Installing USB driver, click "Next".



2.3 Click "Finish", the driver is installed successfully.



Please e-mail us at info@concox.cn for any question or feedback