

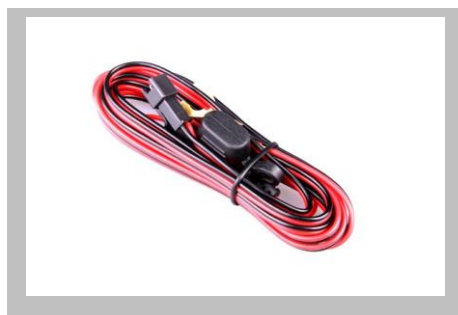
User Manual

(Version 2.0T)



This user manual has been specially designed to guide you through the functions and features of your GPS vehicle tracker.

1. Accessories



Charging cable (Standard)

2. Specification

Dimension	86.6(L) x 44(W) x 13.6(H) mm
Weight	50.5g
Operation Temperature	-20°C - 70°C
Operation Voltage	9-36vDC
Humidity	20% - 80%
GSM Frequencies	850/900/1800/1900 MHz
GPRS	Class 12
GPS Sensitivity	-159dBm
Acquisition Sensitivity	-144dBm
Position Accuracy	10m
TTFF (Open Sky)	Cold Start: <38s
	Warm Start: <32s
	Hot Start: <2s
GSM/GPS Antenna	Built-in design
LED Indicator	GSM-green, GPS-blue, Power-red
Data Transmit	TCP, SMS
Non-movement Detection	Movement alarm based on built-in 3D motion sensor
Mileage Report	Track by time/distance interval

3. Quick Operation Instructions

Change APN parameter by sending SMS “[APN,666666,APN name#](#)” and “[SERVER,666666,1,www.cooaccess.net,8821,0#](#)” to the device.

3.1 Locate current position by GPRS/SMS

3.2 GPS tracking platform: www.cootrack.net

3.3 Track by time interval via GPRS

Send SMS “**TIMER,666666,,time(second)#**” to device. 10s in minimum while 18000s(5 hours) in maximum.

3.4 Change password

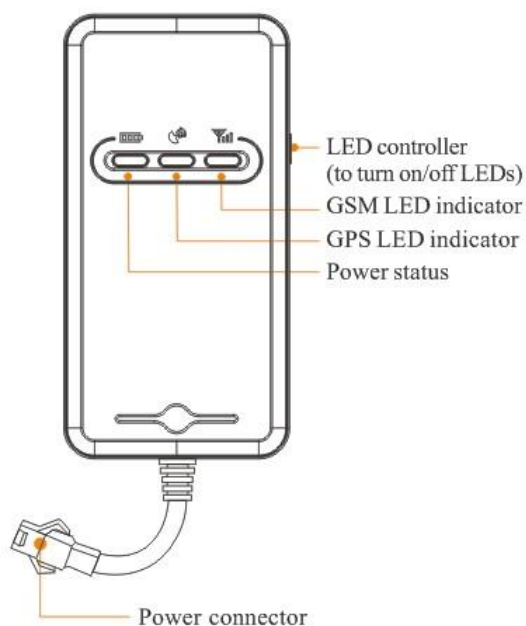
The default password is 666666. Send SMS “**PASSWORD,old password (6 numbers),new password (6 numbers)#**” to the device.

3.5 Real-time Location Tracking via SMS

3.5.1 Send SMS “**WHERE,666666#**” to the device, you will get the current location of the device.

3.5.2 Send SMS “**URL,666666#**” to the device, you will get the URL of the current location by maps.google.com.

4. My Device



5. LED Indications

GPS LED Indicator	
Flashing (1s on, 1s off)	Searching GPS signal
Continuously bright	GPS fix
Continuously dark	No GPS fix or initializing

GSM LED Indicator	
Quick flashing	GSM initializing
Continuously bright	Connected to GSM network
Continuously dark	No GSM signal

Power Status	
Flashing	Power on
Continuously bright	Not working properly
Continuously dark	Power off

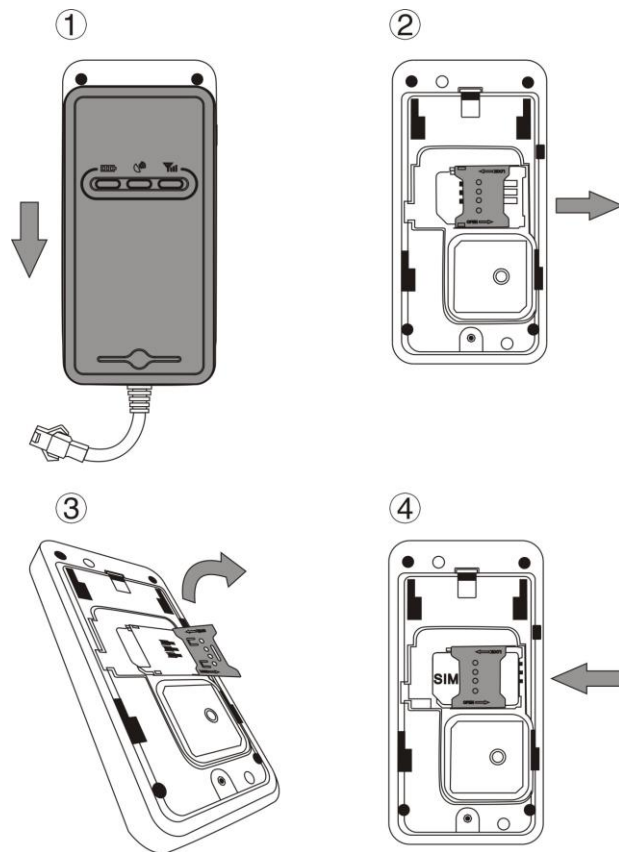
6. Getting Started

Please follow below instructions for ensuring safe and correct use.

6.1 Insert the SIM Card

Place the SIM card into the device with the gold-colored side facing down.

Note: Make sure there is enough credit on the SIM card. It is also important that the SIM card has Called ID Display function. If you will be using the GPRS function, you should pay attention to the current SIM card GPRS charge.

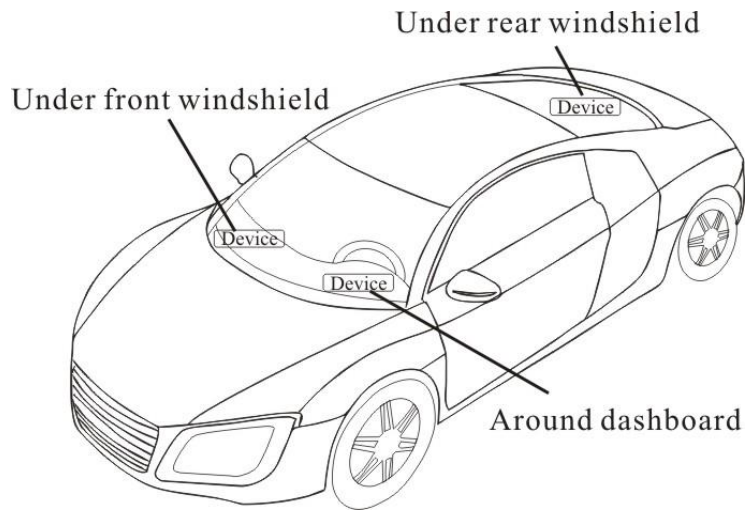


6.2 1) To prevent theft of the device, the device should be installed as covertly as possible.

2) Avoid placing the device close to higher power electrical devices, such as reversing radar, anti-theft device or other vehicle communication equipment.

3) The device should be fixed into position with cable ties or wide double-side tape.

4) Your device has built-in GSM antenna and GPS antenna. During installation, please make sure the receiving side face is up, with no metal object above the device to interfere with GPS reception. The following places are suggested for installation:



- Under the dash board below the front windshield;
- In the parcel shelf in the rear;
- In the front bumper(non-material face), please ensure the device cannot get wet;
- Under the wiper version (non-metal), please ensure the device cannot get wet;

Notice: If the windshield is pasted with metal thermal-protective coating, it may affect the performance of the device. In this case, please change the installation place after consulting the professional.

5) Non Covert Installation,

Firstly fix the device on the dash board below windshield.

7. Cautions of device wiring

7.1 The standard voltage is 9V-36V, the red wire is the positive, the black wire is the negative.



7.2 Please connect the black wire to ground.

7.3 After connecting the power cord, run the power cord plug to the device. After installation, supply power to device.

7.4 Covert installation: car battery cord is standard, with 2A FUSE for short-circuit over current protection.

7.5 Non covert installation: cigar lighter cord is optional, with 2A FUSE for short-circuit over current protection. Please contact your dealer if this mode is needed.

8. Power on/ off

8.1 The device will power on automatically when connected to power.

During normal operation, red power LED flashes, while blue GPS LED and green GSM LED keep lighting. During signal searching process, GPS or GSM LED will flash. If there is no light presenting on LEDs, the device is not working normally.

8.2 The device will power off after power is disconnected.

9. Side key function

At normal-work indication status, press the side key, all the three LEDs will extinguish and then the device will enter covert working mode. Press the key again, the three LEDs will go back to normal-work indication

status.

10. Troubleshooting

10.1 If GPS can not receive the signals normally, please drive to the open areas for positioning. Generally, it needs 1-2 minutes to receive the first coordinates. If the data can not be received after 2-3 minutes, please check the installation position of the device, making sure it is not being shielded by any metal.

10.2 If GSM can not receive the signals normally, please check whether SIM card is installed correctly or there is no GSM signal at the current location , such as a basement parking, please drive to a place covered by GSM signal.

10.3 If the red LED does not work when power is connected, check whether the fuse is blown. If so, please replace the fuse.

10.4 If the three LEDs do not turn on when power up, press the down side key, if the three LEDs recover normally, the device is working normally.

10.5 If you have enabled the web based tracking application, and the device displays off-line on the platform, please check 3 LEDs status indicators first. You can check the status of the SIM card when you are in an inconvenient situation. Please refer to the following steps:

1) Call the device to check whether you can get through.



- 2) Check whether the SIM card supports GPRS and a local APN.
- 3) Check the GSM/GPS reception area.
- 4) Check whether there is enough credit on the SIM card.
- 5) Check if the connector and terminal is loose or the fuse has blown out.

11. Please register and log onto our GPS platform by:

www.cootrack.net

The function on the GPS platform can be realized as follows:

Real-time Tracking

Receive and Display Alarms

Report and Statistics

Online Configuration

Warranty instructions and service

1. The warranty is valid only when the warranty card is properly completed, and upon presentation of the proof of purchase consisting of original invoice indicating the date of purchase, model and serial No.of the product. We reserve the right to refuse warranty if this information has been removed or changed after the original purchase of the product from the dealer.

2. Our obligations are limited to repair of the defect or replacement the defective part or at its discretion replacement of the product itself.
3. Warranty repairs must be carried out by our Authorized Service Centre. Warranty cover will be void, even if a repair has been attempted by any unauthorized service centre.
4. Repair or replacement under the terms of this warranty does not provide right to extension or renewal of the warranty period.
5. The warranty is not applicable to cases other than defects in material, design and workmanship.

Maintenance Record

Date		Serviced by	
Product Model			
IMEI Number			
Fault Descriptions			
Comments			

ShenZhen Concox Information Technology CO.,Ltd

Tel: +86 755 2912 1200

Fax: +86 755 2912 1290

E-mail: jason@concox.cn.

Add: 4/F, Building B, Gaoxinqi Industrial Park,
Liuxian 1st Road, No.67 Bao'an District, Shenzhen

www.iconcox.com